



# User Manual

AW-V80



Alpha Works

# Important safety instructions

- 1, Please do not place device near any form of heat sources.
- 2, Please use the accessories specified by the manufacturer.
- 3, Please refer all servicing/ repairs to a qualified personnel should there be any form of damage to the device.
- 4, Keep this user manual for future reference/ troubleshooting.
- 5, Please read ALL safety cautions.

## Safety cautions

- 1, Always keep device away from fire and heat sources.
- 2, Do NOT attempt to disassemble or alter the device.
- 3, Do NOT expose device to excessive heat (direct sunlight etc.).
- 4, Do NOT put device into any form of liquids.

The above playback & charging times are estimated values tested in a practical environment and may vary upon individual usage habits.

# Product specifications

Multiple Compatibility with MP3, Phone, Pad, Desktop/laptop

Feature: Portable, Wireless, AC powered

AC Voltage: 110-240V 50-60Hz

BT Version: V5.0

Power Output: 80W

Impedance: 4Ω

Frequency Response: 60Hz - 23KHz

S/N Ratio: ≥80dB

Sensitivity: 400mV

Supports: BT, AUX, USB

Supported Profiles: MP3, WMA, WAV, FLAC

Transmission Distance (Estimated): 10 Meters (No Obstacles)

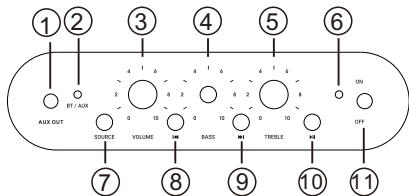
DC Input Voltage / Current: 5V DC, 1/2A

Battery: 7.4V / 6000mAh

Playback Time: 4-5 hours

Charging Time: 4-5 hours

## Top Control Panel



1.AUX OUT

2.Charging indicator light(red while charging,green when battery full charged)

3.Master volume knob

4.Bass adjustment knob

5.Treble adjustment knob

6.AC power indicator

7.Source button

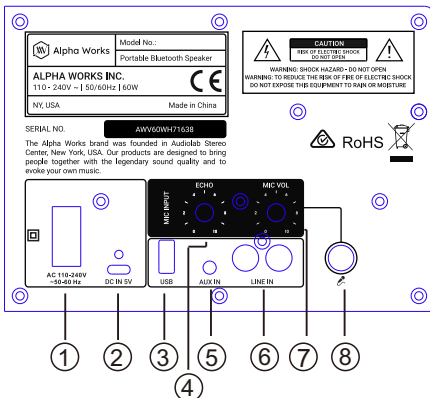
8.Previous song

9.Next song

10.Play/Pause button

11.Power ON/OFF

# Back Control panel



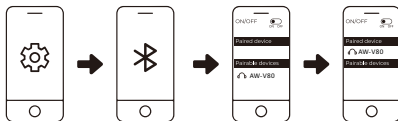
1. Power input AC~240V/Hz
2. Charging Type-C DC IN 5V/2A
3. USB Port
4. Microphone echo adjustment
5. AUX IN
6. RCA LINE IN
7. Microphone volume
8. Microphone socket

# Playback sources

USB playback: insert USB into USB port, playback will start automatically.

AUX playback: disconnect all BT devices before inserting AUX cable and connect it to audio source to start.

## Connecting the product



- 1, Turn on Bluetooth(BT) on your mobile device.
- 2, Turn on the speaker.
- 3, Search and connect to “AW-V80”from your mobile device.
- 4, Press and hold Play/ Pause button for 3-4 seconds to disconnect.

## Battery & Charging

Charging the speaker:

Connect Type-C charging cable to the speaker and a suitable power source.

Approximate charging time :4-5 hours

Pease fully charge up the speaker prior to first-time usage.

# Troubleshooting

Unable to connect to device:

- 1, Please ensure the speaker is not connected to other devices.
- 2, Please ensure the speaker is within 10m from the device.

Not sound is coming out of the speaker:

- 1, Please ensure your device is connected to the speaker.
- 2, Please ensure the music volume is at an audible level on both your mobile device and speaker.