



User Manual

AW-V60



Alpha Works

Important safety instructions

- 1, Please do not place device near any form of heat sources.
- 2, Please use the accessories specified by the manufacturer.
- 3, Please refer all servicing/ repairs to a qualified personnel should there be any form of damage to the device.
- 4, Keep this user manual for future reference/ troubleshooting.
- 5, Please read ALL safety cautions.

Safety cautions

- 1, Always keep device away from fire and heat sources.
- 2, Do NOT attempt to disassemble or alter the device.
- 3, Do NOT expose device to excessive heat (direct sunlight etc.).
- 4, Do NOT put device into any form of liquids.

The above playback & charging times are estimated values tested in a practical environment and may vary upon individual usage habits.

Product specifications

Multiple Compatibility with MP3, Phone, Pad, Desktop/laptop

Feature: Portable, Wireless, AC powered

AC Voltage: 110-240V 50-60Hz

BT Version: V5.0

Power Output: 60W

Impedance: 4Ω

Frequency Response: 60Hz - 23KHz

S/N Ratio: ≥80dB

Sensitivity: 400MV

Supports: BT, AUX, USB

Supported Profiles: MP3, WMA, WAV, FLAC

Transmission Distance (Estimated): 10 Meters (No Obstacles)

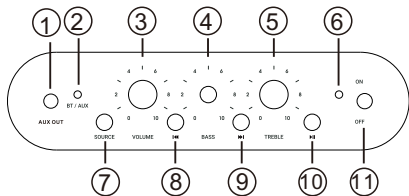
DC Input Voltage / Current: 5V DC, 1/2A

Battery: 7.4V / 6000mAh

Playback Time: 4-5 hours

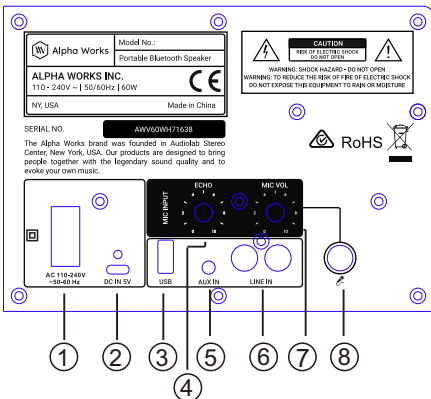
Charging Time: 4-5 hours

Top Control Panel



- 1.AUX OUT
- 2.Charging indicator light(red while charging,green when battery full charged)
- 3.Master volume knob
- 4.Bass adjustment knob
- 5.Treble adjustment knob
- 6.AC power indicator
- 7.Source button
- 8.Previous song
- 9.Next song
- 10.Play/Pause button
- 11.Power ON/OFF

Back Control panel



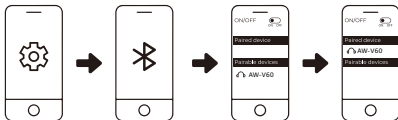
1. Power input AC~240V/Hz
2. Charging Type-C DC IN 5V/2A
3. USB Port
4. Microphone echo adjustment
5. AUX IN
6. RCA LINE IN
7. Microphone volume
8. Microphone socket

Playback sources

USB playback: insert USB into USB port, playback will start automatically.

AUX playback: disconnect all BT devices before inserting AUX cable and connect it to audio source to start.

Connecting the product



- 1, Turn on Bluetooth(BT) on your mobile device.
- 2, Turn on the speaker.
- 3, Search and connect to “AW-V60”from your mobile device.
- 4, Press and hold Play/ Pause button for 3-4 seconds to disconnect.

Battery & Charging

Charging the speaker:

Connect Type-C charging cable to the speaker and a suitable power source.

Approximate charging time :4-5 hours

Pease fully charge up the speaker prior to first-time usage.

Troubleshooting

Unable to connect to device:

- 1, Please ensure the speaker is not connected to other devices.
- 2, Please ensure the speaker is within 10m from the device.

Not sound is coming out of the speaker:

- 1, Please ensure your device is connected to the speaker.
- 2, Please ensure the music volume is at an audible level on both your mobile device and speaker.